



- SITE AREAS:
 STAND 1: 867m²
 STAND 2: 1011m²
 STAND 3: 445m²
 STAND 4: 412m²
 STAND 5: 894m²
 STAND 6: 894m²

SITE PLAN

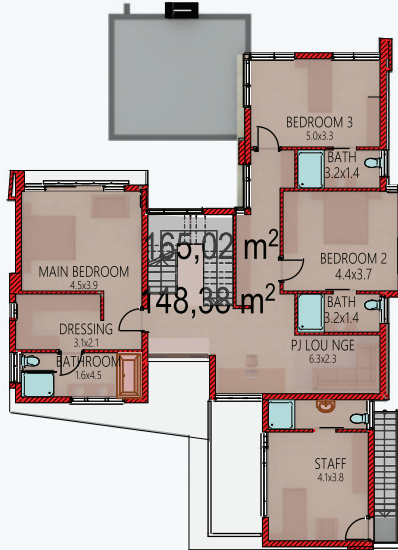
1:250





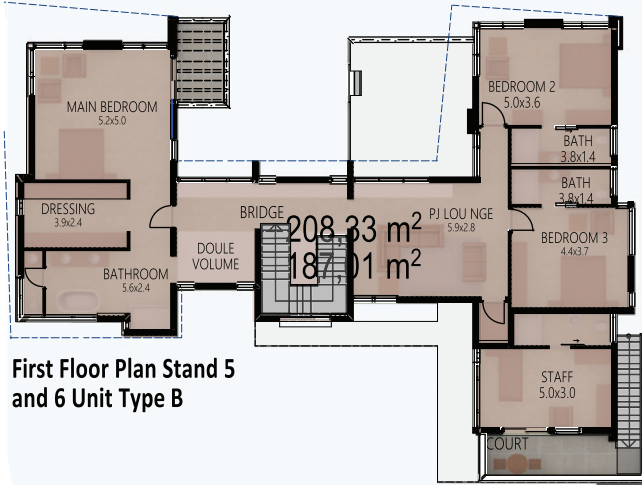
Ground Floor Plan Stands 3 and 4 Unit Type A

GROUND FLOOR:	168m ²
FIRST FLOOR:	165m ²
TOTAL:	333m ²
COVERED PATIO	27m ²
TOTAL AREA:	360m ²
USABLE:	
GROUND FLOOR	152m ²
FIRST FLOOR:	148m ²
TOTAL USABLE:	300m ²
USE EFFICIENCY	90%*
* EXCLUDES PATIO	



First Floor Plan Stands 3 and 4 Unit Type A





Ground Floor Plan Stands 5 and 6 Unit Type B

GROUND FLOOR: 212m²
 FIRST FLOOR: 208m²
 TOTAL: 420m²
 COVERED PATIO: 25m²
 TOTAL AREA: 445m²
 USABLE:
 GROUND FLOOR: 190m²
 FIRST FLOOR: 187m²
 TOTAL USABLE: 377m²
 USE EFFICIENCY: 90%*
 *EXCLUDES PATIO

First Floor Plan Stand 5 and 6 Unit Type B





**Ground Floor Plan Stand 2
Unit Type C**

GROUND FLOOR:	255m ²
FIRST FLOOR:	241m ²
TOTAL:	496m ²
COVERED PATIO	32m ²
TOTAL AREA:	528m ²
USABLE:	
GROUND FLOOR	231m ²
FIRST FLOOR:	219m ²
TOTAL USABLE:	450m ²
USE EFFICIENCY	90%*
* EXCLUDES PATIO	



**First Floor Plan Stand 2
Unit Type C**



**Ground Floor Plan Stand 1
Unit Type D**

GROUND FLOOR: 222m²
 FIRST FLOOR: 230m²
 TOTAL: 452m²
 COVERED PATIO: 39m²
 TOTAL AREA: 491m²
 USABLE:
 GROUND FLOOR: 200m²
 FIRST FLOOR: 206m²
 TOTAL USABLE: 406m²
 USE EFFICIENCY: 90%*
 * EXCLUDES PATIO



**First Floor Plan Stand 1
Unit Type D**





AERIAL FROM NORTH WEST

PLOVER PARK, BRYANSTON



AERIAL OVER GATEHOUSE TO EAST

PERSPECTIVE GATEHOUSE & ENTRANCE



PLOVER PARK, BRYANSTON